

## Cavity wall lintels - low height

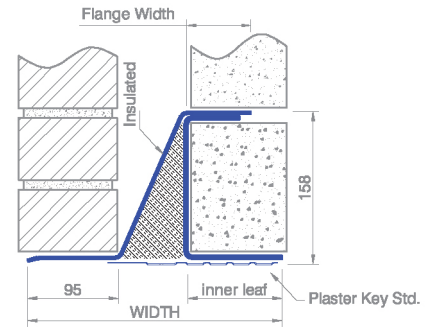
# CC15 range

CC15 are designed for applications where the height is limited but there is likely to be a significant load on the inner, such as supporting the flat roof of an extension.

Specification table for CC15 Lintels

Nominal cavity size (mm)	Nominal inner leaf (mm)	SPECIFY	Overall Height (mm)	Overall Width (mm)	Steel Gauge (mm)	Mass (kg/m)	Form Type	Ixx (cm <sup>4</sup> )	Zxx (cm <sup>3</sup> )
47-56	100-115	CC15-100/50/100	154	242	2.0	9.6	1	465.7	53.53
	125-140	CC15-100/50/125	154	267	2.0	9.6	1	448.4	48.22
	190-215	CC15-100/50/190	156	332	2.0	13.7	2	637.4	59.57
57-71	100-115	CC15-100/60/100	154	252	2.0	9.6	1	462.2	53.13
	125-140	CC15-100/60/125	154	277	2.0	9.6	1	443.9	47.73
	190-215	CC15-100/60/190	156	342	2.0	13.8	2	637.2	59.55
72-84	100-115	CC15-100/75/100	154	267	2.0	9.6	1	455.9	51.81
	125-140	CC15-100/75/125	154	292	2.0	9.6	1	436.6	46.45
	190-215	CC15-100/75/190	156	357	2.0	14.0	2	630.1	58.34
85-96	100-115	CC15-100/90/100	154	279	2.0	9.6	1	449.7	51.10
	125-140	CC15-100/90/125	154	304	2.0	9.6	1	429.6	47.21
	190-215	CC15-100/90/190	156	369	2.0	14.2	2	627.1	57.01
97-119	100-115	CC15-100/100/100	154	292	2.0	9.6	1	442.5	49.72
	125-140	CC15-100/100/125	154	317	2.0	9.6	1	421.3	44.35
	190-215	CC15-100/100/190	156	382	2.0	14.4	2	619.7	55.83
120-139	100-115	CC15-100/120/100	154	315	2.0	10.0	3	446.3	51.30
	125-140	CC15-100/120/125	154	340	2.0	10.3	3	459.8	51.09
	190-215	CC15-100/120/190	156	405	2.0	15.1	4	644.9	58.63
140-160	100-115	CC15-100/140/100	154	335	2.0	10.2	3	458.2	53.28
	125-140	CC15-100/140/125	154	360	2.0	10.4	3	459.6	51.07
	190-215	CC15-100/140/190	156	425	2.0	15.7	4	679.0	61.73

NOTES: The lintel form varies over the CC15 range; see bottom page 18. Form types 3&4 require a separate DPC over, types 1&2 do not, and are supplied complete with stop ends\* to affix on site (refer pages 78&88).



Need a stronger lintel? Try the CC16 >

Allowable load for all CC15 Lintels\*

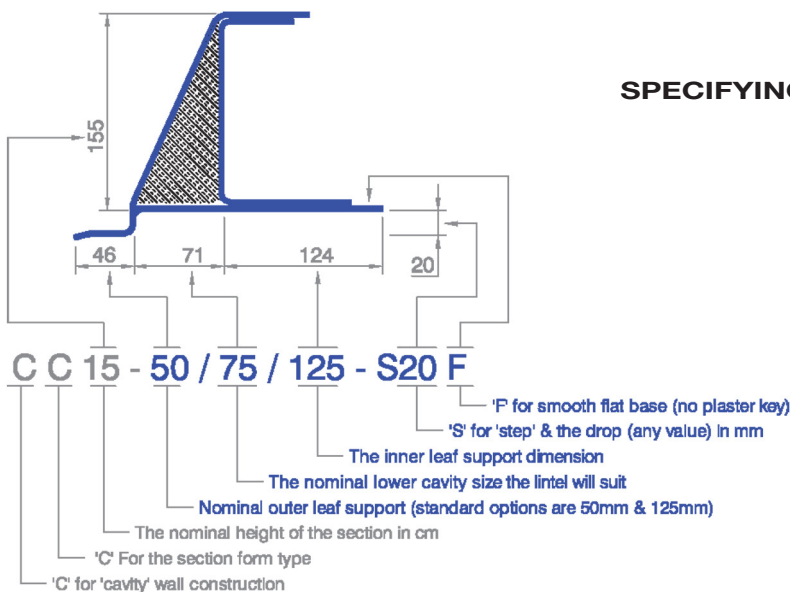
Opening Span	Lintel Length	Max total load (kN)*	Load Example (see pg 85)
1200	1500	40.8	masonry & tiled roof
1350	1650	40.8	
1500	1800	40.8	
1650	1950	40.8	
1800	2100	40.8	
1950	2250	40.8	masonry & timber floor
2100	2400	40.8	
2250	2550	35.5	
2400	2700	31.2	
2550	2850	27.6	full height masonry
2700	3000	24.7	
2850	3150	22.1	
3000	3300	20.0	
3150	3450	18.1	900mm of masonry
3300	3600	16.5	
3450	3750	15.1	
3600	3900	13.9	440mm of masonry
3750	4050	12.8	
3900	4200	11.8	

Shorter & Intermediate lengths can be produced

Permissible Moment\*: 11.5 kN.m  
Permissible Point Load\*: 10.2 kN

LOAD RATIO LIMITS\* (OUTER : INNER)  
65-100% Max load: 1:2 - 1:14 OR < 65% Max Load: 1:1 - 1:19

\*See page 78 for loading & Installation guide



### SPECIFYING OPTIONS FOR CC-TYPE LINTELS

The specification convention for CC lintels is shown here with an example.

Should you require something different from the standard lintels listed in the tables, the specification components in blue can be varied to achieve non standard dimensions and features such as:

- a stepped outer,
- flat base (no plaster key), or
- shorter or longer inner and/or outer

All as shown in the example to the right.

\*Standard stop ends supplied are adhesive for installation on site. For fully welded stop-ends incorporated into the lintel, specify 'LINTRAY@'.

Many variations are possible, we can even hide the lintel with Feature Brick options! (see page 74) - All standard in LDX2101® Stainless Steel. Call 01206 79 2001 to discuss or visit [www.stainless-lintels.co.uk](http://www.stainless-lintels.co.uk)